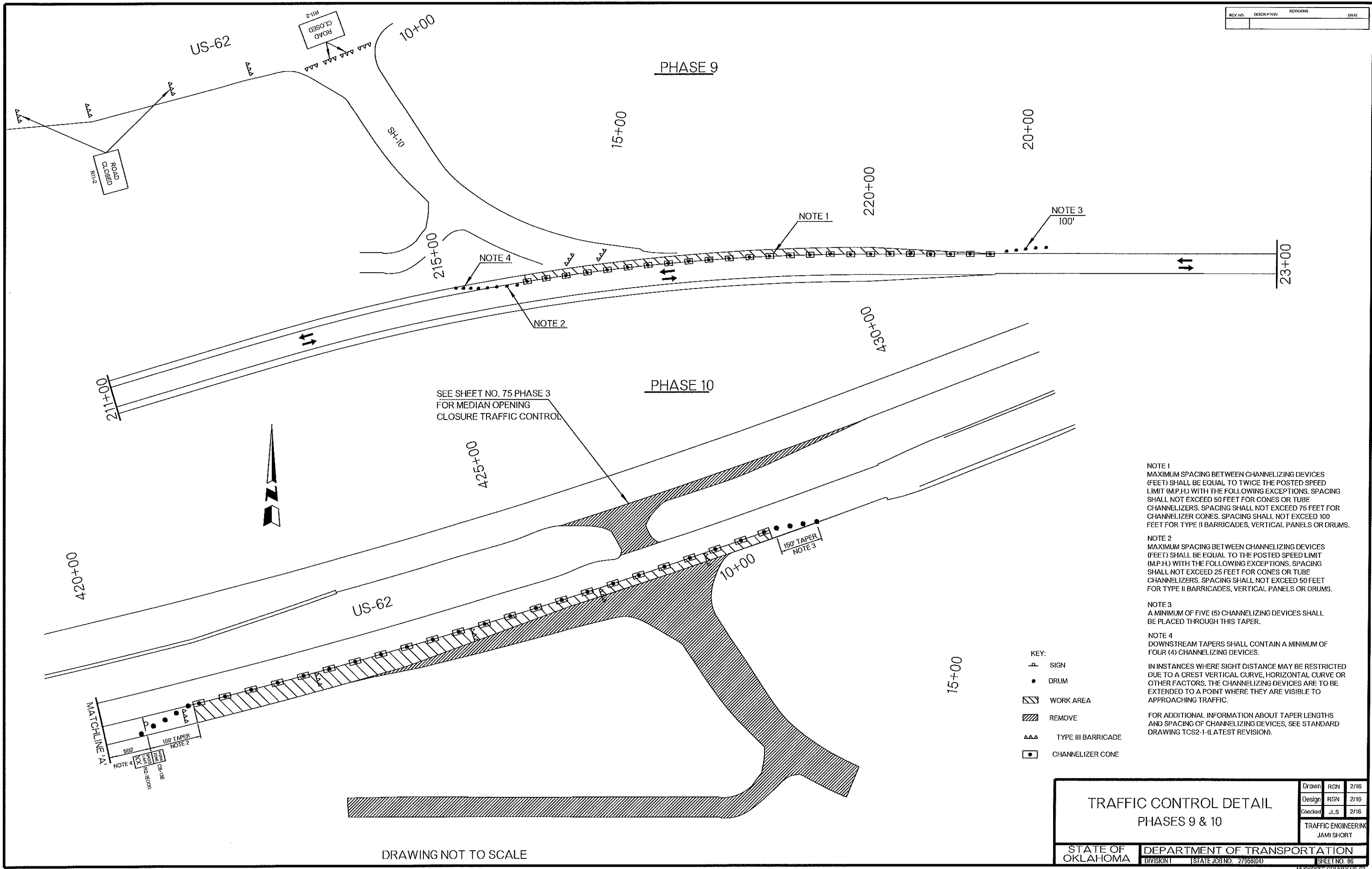


REV. NO.	DESCRIPTION	REVISIONS	DATE



SEE SHEET NO. 75 PHASE 3
FOR MEDIAN OPENING
CLOSURE TRAFFIC CONTROL

NOTE 1
MAXIMUM SPACING BETWEEN CHANNELIZING DEVICES (FEET) SHALL BE EQUAL TO TWICE THE POSTED SPEED LIMIT (M.P.H.) WITH THE FOLLOWING EXCEPTIONS. SPACING SHALL NOT EXCEED 50 FEET FOR CONES OR TUBE CHANNELIZERS. SPACING SHALL NOT EXCEED 75 FEET FOR CHANNELIZER CONES. SPACING SHALL NOT EXCEED 100 FEET FOR TYPE II BARRICADES, VERTICAL PANELS OR DRUMS.

NOTE 2
MAXIMUM SPACING BETWEEN CHANNELIZING DEVICES (FEET) SHALL BE EQUAL TO THE POSTED SPEED LIMIT (M.P.H.) WITH THE FOLLOWING EXCEPTIONS. SPACING SHALL NOT EXCEED 25 FEET FOR CONES OR TUBE CHANNELIZERS. SPACING SHALL NOT EXCEED 50 FEET FOR TYPE II BARRICADES, VERTICAL PANELS OR DRUMS.

NOTE 3
A MINIMUM OF FIVE (5) CHANNELIZING DEVICES SHALL BE PLACED THROUGH THIS TAPER.

NOTE 4
DOWNSTREAM TAPERS SHALL CONTAIN A MINIMUM OF FOUR (4) CHANNELIZING DEVICES.

IN INSTANCES WHERE SIGHT DISTANCE MAY BE RESTRICTED DUE TO A CREST VERTICAL CURVE, HORIZONTAL CURVE OR OTHER FACTORS, THE CHANNELIZING DEVICES ARE TO BE EXTENDED TO A POINT WHERE THEY ARE VISIBLE TO APPROACHING TRAFFIC.

FOR ADDITIONAL INFORMATION ABOUT TAPER LENGTHS AND SPACING OF CHANNELIZING DEVICES, SEE STANDARD DRAWING TCS2-1 (LATEST REVISION).

- KEY:
- SIGN
 - DRUM
 - ▨ WORK AREA
 - ▩ REMOVE
 - ▲▲ TYPE III BARRICADE
 - ◻ CHANNELIZER CONE

TRAFFIC CONTROL DETAIL PHASES 9 & 10		Drawn	RGN	2/16
		Design	RGN	2/16
STATE OF OKLAHOMA DIVISION 1		Checked	JLS	2/16
		TRAFFIC ENGINEERING JAMI SHORT		
STATE OF OKLAHOMA DIVISION 1		DEPARTMENT OF TRANSPORTATION STATE JOB NO. 27958(04)		SHEET NO. 86

DRAWING NOT TO SCALE